



DAILY NEWS

No 4 | Friday
10 November 2017



Digitalisation transforms maritime industry

Big data is, without a doubt, a game changer. Increasingly, shipboard systems are equipped with an IP address and sensors, enabling the collection and analysis of performance data.

Yesterday's Masterclass "How big data can improve operational performance" attracted about 80 people, who wanted to hear about the potential offered by new technologies and processes.

There are certainly a few buzzwords in the maritime industry these days that no one gets around. Big data is one of them as well as disruption and industry 4.0.

Chairman of Thursday's Masterclass, Henk van den Boom, head of the trials and monitoring department of Maritime Research Institute Netherlands (MARIN), welcomed the guests by addressing one of the pressing aspects of the current discussion on digitalisation: How to get meaningful information from the collected vast amount of data.

The first presentation was given by Matt Duke, vice president at Kongsberg Digital, who tried to find an answer to the question "What are the consequences of data-driven decision making in shipping?"

With the digital platform 'Kognifai', which was launched earlier this year, he presented

a pathway for collaboration in the digital transformation of the maritime industry. Kognifai is an all-encompassing and open digital ecosystem for users to collect, store, analyse, and apply the data they generate using Kongsberg and third-party systems.

Duke also gave a few insights into the *Yara Birkeland* project, a container vessel that will be delivered in 2018 and is expected to be remotely controlled in 2019 and fully autonomous by 2020.

The digitalisation of processes and equipment can have a big impact, Duke said. "If you digitalise noon reports, for example, this is very useful for the crew. You can much

imes
the cylinder pressure people
www.imes.de

Cylinder Pressure Sensors
for permanent pressure control on engines

Advanced Technology for diesel-, gas- and dual-fuel engines
All our sensors convince with their long term accuracy with minimal signal drift over long periods and enable the acquisition of high accurate processable data. They provide a vital input to electronic control, monitoring and diagnose systems.

EUROPORT
exhibition for
maritime technology
7-10 November 2017
Rotterdam Ahoy
Stand no. 5209



»The digital transformation is one of the most analogue things I can think of, because you need the people to do it«

Matt Duke

easier find out if there are areas to improve rather than only trusting your gut feeling.” Especially when it comes to gathering key performance indicators, such as fuel consumption, emissions and maintenance intervals, the collection and analysis of data is crucial. The next very technical and what he called “a nerdy talk” was given by Gerben

de Boer, data scientist at the international dredging and offshore contractor Van Oord. As the use of big data to monitor the progress of operations is very important for the company, de Boer discussed its approach to data collecting and analysis of mission-critical dredging equipment. One aspect he emphasised was the shift

from local storage of the data to the cloud: “You have to move to the cloud, otherwise you cannot have big data.” Even more important, de Boer said, is that the industry needs a new generation of people to make the collected data valuable.

Bert Ritscher, business development manager at Caterpillar Marine Asset Intelligence, then explained that shipowners could benefit from the development of smart engines and other shipboard components by reduced operating and maintenance cost, optimised performance and efficiency and reduced risks and increased safety.

The last presentation was held by Michiel Post, technical product manager Hybrid Energy at RH Marine, who showed how big data can be applied to improve designs and operational performances. One important aspect he mentioned was the predictive maintenance of equipment, such as propellers, to identify deviations and prevent failure of components.

Focusing on safety and security

Shipbuilding supplier Wiska based in Kaltenkirchen, Germany, is exhibiting its maritime lighting, reefer container sockets and CCTV camera surveillance products.

Among the solutions on display is the new LED Floodlight 5000, said to be the first floodlight that both conducts heat and resists corrosion thanks to a special plastic module.

With Varitain® PushIn Advance, Wiska is presenting its latest generation of reefer container sockets. One of its features is an easily accessible power terminal that has been relocated to the outside and thus offers maximum ease of installation. This means the casing lid remains closed, minimising the risk of damage during installation.

What’s more, by moving the power port to the outside, the product is now 40% smaller.

With its LED Ex Luminaire 4200, developed from the successful watertight luminaire 4000, Wiska supplies a rugged solution for the extreme challenges presented by maritime and offshore sectors. The LED Ex Luminaire 4200 is both reliable and maintenance-free because it does not use a driver that is likely to fail and it has been reduced to only a few key components.

Wiska Hoppmann GmbH at Europort:
Stand 2112

ZF is Propulsion.

Equipped to serve the demands of the offshore industry.

ZF provides customers with a wide-ranging line of robust products – marine transmissions, control systems, propellers and steerable thrusters – highly efficient, reliable and specifically designed for workboat applications. **ZF.com/marine**



Europort exhibition
in Rotterdam,
7-10. Nov. 2017,
Booth No. 1311
Visit us.



Ocean Clean presents new STP series

The German company Ocean Clean is specialised in building sewage treatment plants (STP) for all kind of vessels. At this year's exhibition, Ocean Clean is presenting its latest development, the EasyC STP series, focusing on reliability and cost efficiency.



Michael Grund and Stefan Kunz presenting the new sewage treatment plant

Instead of using high-tech membrane filters that require in-depth understanding of the STP concept, the EasyC uses disposable filters. These filters even work in unstable operating conditions and can easily be exchanged. The small number of components of the STP reduces maintenance time to a minimum, Ocean Clean said.

The new system will be available in different sizes, the biggest one able to treat 9.0m³/d of grey and black water. Grease traps for galley fat filtration and vacuum systems for black water transportation are available. Ocean Clean will also provide a high-capacity drain pump to quickly empty the STP.

Ocean Clean at Europort:
Stand 1102

Reliable components

Liebherr Components division is a specialist in the development and production of high-performing components for mechanical, hydraulic and electrical drive systems and control technology. All products, which are on show in Rotterdam, feature outstanding quality and sturdy design.

As a powerful partner of the maritime industry, Liebherr has been developing electric machines and control technology, gearboxes, winches, slewing bearings and hydraulic components for many years. These have been successfully used in a wide range of maritime applications including offshore winches, ship, offshore and container cranes, propulsion systems and special equipment for units such as pipe-laying ships and jack-up platforms.

In cooperation with Sandfirden Technics, Liebherr also develops complete solutions for hybrid ship propulsion systems.

Liebherr Components at Europort:
Stand 1105



Liebherr Components is presenting its portfolio in Rotterdam

Importance of human resources

The Human Factor is a key theme of Europort 2017, which today will stage the Masterclass 'How HR can make your organisation future proof'. Expert speakers will explore how a new perspective on HR can be beneficial in preparing organisations for upcoming challenges and trends and help them reach their business targets.

Alongside the Masterclass, the final day of the exhibition at Europort 2017 is designated as 'Human Capital Day'.

Any maritime business relies on its workforce to innovate and adapt, often in

tough and changing market conditions. In fact, people are the most important assets in the maritime sector and organisations must invest in bridging the talent gap or risk losing out to competitors, especially as there is a shortage of suitably qualified and experienced seafarers, on-shore staff and shipyard workers worldwide. This is one of the main reasons the organisers of this year's Europort again dedicated the last day of the show to human resources.

Organiser: Rotterdam Ahoy / Netherlands Maritime Technology
Location: Port 2

Offshore motion? plastics!

Strong, safe, light – turnkey e-chain® systems for offshore, oil and gas

Failsafe cables for the offshore, oil and gas industry ...

- 36 month guarantee for every cable
- Sludge-resistant cables according to NEK606, certified by DNV GL
- ... protected and guided by strong, safe and light e-chains
- 50 % lighter than steel, maintenance-free, corrosion-free, UV-resistant
- Resistant to seawater, to dirt and sludge, chemicals, extreme temperatures

See video references at igus.eu/offshore

Europort 2017 – Stand 2404

igus® GmbH info@igus.de Spicher Str. 1a 51147 Köln Tel. +49-2203-9649-800



• plastics for longer life
igus

5 Questions For...

Henning Weise

CEO/Owner, SeaServ GmbH

1 What does Europort 2017 mean to you?
Our intention to be here was to show the strength of the new partnership between AVS in Istanbul and SeaServ and to promote our new cloud-operated system of catering. Furthermore, the exhibition has been a perfect place for us to visit our suppliers and receive information about innovations during intense networking here in Rotterdam.

2 Did the show meet your expectations?
Yes. It was again very informative. We had good and fruitful meetings at our booth as well as during get-togethers in the evening.

3 What challenge does your company currently face?
Everybody would expect that our challenge at the moment is to bring two companies

together, one in Istanbul and one in Hamburg. But that is totally wrong. My partner, Vahit Simsek, and I are proud to have two professional teams with us, who show how easy cooperation can be with tolerance, respect and passion. We are not facing real challenges. We are serving a moving, tough market. But we are creative and strong enough to react on changes.

4 What role does digitalisation play in your daily work?

It plays a big role. Our offices in Istanbul and Hamburg are connected via one platform. Our cloud-based catering and worldwide supply system is actually the biggest innovation in the market.

The in-house development of this platform with our own companies MindServ/Hamburg and EDMAR/Istanbul will sup-



Henning Weise

port our customers as well as our suppliers during the move into a more digitised industry.

5 What do you think does the future hold for the maritime industry in general?

The industry has always been changing. Big challenges have been solved by high-professional leaders and teams in the business. The maritime market is tough, colourful, interesting, challenging. And it is nice to be a part of this big family.



Felix Gellert (R&D) and Oliver Kreienkamp (production manager)

Marine filter specialists

Hamburg-based FIL-TEC Rixen GmbH is a first-time exhibitor at this year's Europort. The company is displaying different filters, filter elements, mobile filtration units, cleaning tools, centrifuges and its services.

FIL-TEC Rixen at Europort: Stand 1409

Orders for tugs and Waterbus vessels

On Wednesday, towage and marine services company Smit Lamnalco ordered four Damen ASD 3212 tugs.

Making the announcement at the Europort exhibition, Smit Lamnalco CEO Mauro Fernando Sales, said: "We decided to invest in four new Damen ASD tugs following the recent award of two important contracts – one in Australia and the other in Oman.



Signing of the contract for the ASD 3212 tugs at Europort 2017

Two of the new Damen ASD 3212 tugs will head for the mining town of Weipa in Queensland, Australia, in the third quarter of 2018, where they will be deployed on a Rio Tinto project.

In Oman, the other two Damen ASD 3212 tugs will work at a terminal operated by the Oman India Fertiliser Company S.A.O.C (OMIFCO) in the Port of Sur. These tugs are due to be delivered in June 2018 and will be operated by the joint venture Bahwan Lamnalco Company (BLC).

Already on Tuesday, Damen Shipyards Group and Belgian ferry operator Aqualiner signed a contract for the delivery of three Damen Waterbus 2407 vessels, for operations on the river Scheldt in Antwerp. The Waterbus 2407 is a new composite design from Damen, first unveiled just over a year ago. Lightweight, low maintenance and fuel efficient, it can carry up to 100 passengers at speeds up to 21 knots.

Damen Shipyards at Europort: Stand 1221

Portfolio on display

Yanmar Europe is presenting its range of commercial marine products in Rotterdam.

The company's commercial high-speed portfolio includes the mechanical six-cylinder 6AYM engine and the 12-cylinder 12AYM. Also on display will be the 6AYEM high-speed engine, which features an electronically controlled common-rail fuel system. The company's higher-rated commercial high-speed units will be represented by the 6CXBM super light duty engine and the combination of 6LY440 engine with ZF180 transmission, built for light duty commercial applications.

Yanmar also offers a dual-fuel engine, the medium-speed 1533kW 6EY26DF. The Yanmar display at Europort additionally features the new KM200/300BL gearbox, designed for use with the mechanical 6AYM engine.

Yanmar at Europort: Stand 1220

Unlimited design options

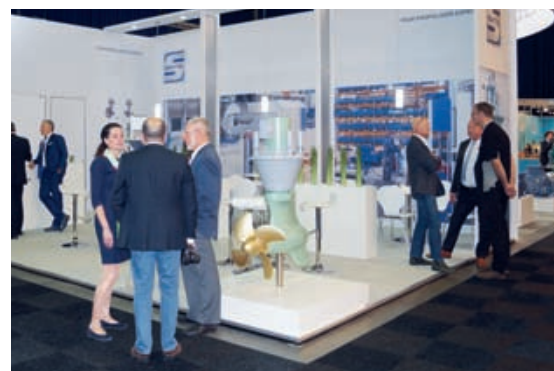
Schottel has launched its versatile Y-Hybrid feature for azimuth thrusters at this year's show.

This, the company claims, transforms conventional Schottel Z-drives into versatile azimuth thrusters enabling unlimited vessel design and operation opportunities. Y-Hybrid gives designers full freedom in terms of the propulsion system layout. It comes as a straightforward option as it causes no noticeable changes to the standard vessel design. With Schottel's new feature, there are no restrictions with respect to power size or source, nor to geometrical arrangements for the hybrid power intake, the German company said.

With Y-Hybrid, the size of the main propulsion diesel engine can be reduced to a smaller and cheaper engine, e.g., common V16 engines can be replaced with V12 engines. In this case, the power difference is substituted by larger gensets and electric motors for the thruster's hybrid power intake.

For vessels that have to operate in emission control areas (ECAs), the Y-Hybrid solution is a simple opportunity to regulate emissions. In combination with a battery, a Y-Hybrid thruster is also suitable to meet zero-emission requirements.

Schottel at Europort:
Stand 1403



Y-Hybrid will be available for all Schottel Z-drives larger than 500 kW by the end of 2018

Maritime Archives

New knowledge data base for specialist information on maritime and offshore technology

Maritime
Archives

Schiff&Hafen
Ship&Offshore
New Ships

Find specialist articles from
Schiff&Hafen
Ship&Offshore
since 2010
and **New Ships**
issues!



Archive access for subscribers of
Ship&Offshore, **Schiff&Hafen**
and **New Ships** included!

**Experience the quality of a traditional library
in conjunction with modern search technology:**

- Full text search
- highlighting of search term
- sorting by relevance or date
- phrase query
- wild card search
- instant download
- permanent article URL

Only bilingual data base for specialist articles on shipbuilding,
shipping and maritime technology
Get access to new articles as soon as they are published

www.maritime-archives.com





Friday 10 November 2017

TOPIC	LOCATION	TIME	ORGANISATION	REGISTRATION
Exhibition				
Europort Exhibition	Ahoy Venue	10.00 - 17.00	Rotterdam Ahoy	Registration required
Conferences				
CEDA Dredging Days 2017	Conference Room	09:00 - 16:45	CEDA	Registration required
Masterclasses				
"How HR can make your organisation future-proof"	Port 2	10:00 - 13:30	Rotterdam Ahoy / NMT	Registration required
Matchmaking				
Start-up Plaza	Hall 6	Continuous	Rotterdam Ahoy	
Awards				
NISS Writing Contest	Dock 5	12:00 - 14:00	NMT	Registration required
Maritime Delta Pitches & Award	Plaza: in Speakers' corner	14:00	Maritime Delta	Registration not required
Seminars and Meetings				
Speakers' Corner	Plaza	Continuous	Rotterdam Ahoy	Registration not required
"Event Inland Shipping 'This will be the news'"	Floyd + Port 1	09:00 - 11:00	BLN	Registration required
SEA Europe Member Meeting	Dock 1 + 2	09:30 - 13:30	SEA Europe / NMT	Members only
Meet Your Peers Event	Dock 5	12:00 - 14:00	NMT	Registration required
OSPAR Work Session: Handling (Plastic) Garbage in the Fishing Sector	Dock 4	13:00 - 17:00	OSPAR	Registration not required
"Mini-symposium on the Royal Netherlands Navy Replacement Programmes"	Dock 1	14:00 - 17:00	NMT / NIDV	Registration required
"Captains of Industry and How to Become One"	Port 2	15:00 - 17:00	Youngship	Registration required
Activities and Social Events				
Shipowners Lounge	Hall 6	11:00 - 17:00	KVNR	
Network Drinks	Port 2	17:00 - 18:00	Youngship	Registration required
Job Route	(Entrances) exhibition floor	Continuous	Navingo	
Student Exposition: Maximising Young Talent	Hall 6, booth: 6615	Continuous	Maritime Delta/ Da Vinci College / TU Delft / STC / Rotterdam Mainport University	Registration not required

› IMPRINT

EUROPORT DAILY NEWS

is published daily during Europort 2017 by
 DVV Media Group GmbH
 Heidenkampsweg 73-79,
 D-20097 Hamburg
 Tel: +49/(0) 40/237 14-0

EDITORS: Dr Silke Sadowski (resp.)
 Kathrin Lau
 Anna Wroblewski

LAYOUT: Maren Diephaus

ADVERTISEMENTS: Tilman Kummer

DISTRIBUTION: Markus Kukuk

PRINT: Drukkerij Damen BV,
 Werkendam, the Netherlands

COPYRIGHT:
 DVV Media Group GmbH

REMOTE MONITORING: HYPE OR FUTURE

DECREASING TOTAL COST OF OWNERSHIP BY REMOTE MONITORING

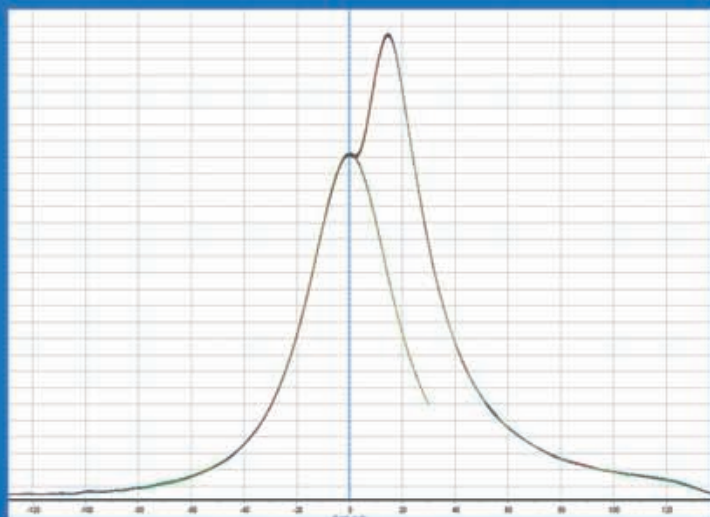
TO FIND OUT MORE ABOUT THE LATEST
 IN REMOTE, 24/7 SERVICE, IT ON BOARD
 AND NAVCOM VISIT US @EUROPORT
 Rotterdam, 7 - 10 November
 Booth **1124** Hall 1



**RADIO
HOLLAND**



the cylinder pressure people



Online Combustion Monitoring System to optimise your engine performance with longlife cylinder pressure sensors

CCM Marine - Online Combustion Monitoring System

Our comprehensive system for analysing combustion data in online and offline real time modes for fixed and portable installations on two- and four stroke engines. Benefit from our longtime experience.

www.imes.de

20 years

